

**From:** [Deibert, Pat](#)  
**To:** [Jesse DElia](#)  
**Subject:** Fwd: maps  
**Date:** Friday, February 27, 2015 12:50:26 PM  
**Attachments:** [NorthGreatBasin\\_PH\\_final.pdf](#)  
[Rangewide\\_PH\\_Final.pdf](#)  
[WYBasin\\_PH\\_final.pdf](#)  
[NoCent\\_MT\\_PH\\_final.pdf](#)

---

----- Forwarded message -----

**From:** **Wiechman, Lief** <[lief\\_wiechman@fws.gov](mailto:lief_wiechman@fws.gov)>  
**Date:** Thu, Feb 26, 2015 at 1:46 PM  
**Subject:** Fwd: maps  
**To:** Pat Deibert <[pat\\_deibert@fws.gov](mailto:pat_deibert@fws.gov)>

----- Forwarded message -----

**From:** **Wiechman, Lief** <[lief\\_wiechman@fws.gov](mailto:lief_wiechman@fws.gov)>  
**Date:** Thu, Feb 19, 2015 at 12:24 PM  
**Subject:** Fwd: maps  
**To:** Kathleen Hendricks <[kathleen\\_hendricks@fws.gov](mailto:kathleen_hendricks@fws.gov)>

Here you go.

***Lief Wiechman***

Sage-grouse Ecologist  
U.S. Fish & Wildlife Service  
Mountain-Prairie Region  
Cell: 307.214.8426  
Office: 307.772.2374 x236  
[lief\\_wiechman@fws.gov](mailto:lief_wiechman@fws.gov)

----- Forwarded message -----

**From:** **Juliusson, Lara** <[lara\\_juliusson@fws.gov](mailto:lara_juliusson@fws.gov)>  
**Date:** Wed, Nov 19, 2014 at 9:07 AM  
**Subject:** maps  
**To:** Lief Wiechman <[lief\\_wiechman@fws.gov](mailto:lief_wiechman@fws.gov)>

Lara Juliusson, Geographer/Ecologist  
Sage-grouse Energy Team  
U.S. Fish and Wildlife Service,  
Region 6, Lakewood, CO  
[Lara\\_Juliusson@fws.gov](mailto:Lara_Juliusson@fws.gov)



303-236-9876

<http://www.fws.gov/mountain-prairie/>

-----  
*Join me on LinkedIn*

<http://www.linkedin.com/pub/lara-juliusson/5/918/7a4>

--

Pat Deibert, PhD

Certified Wildlife Biologist®

U.S. Fish and Wildlife Service

5353 Yellowstone Road, Suite 308A

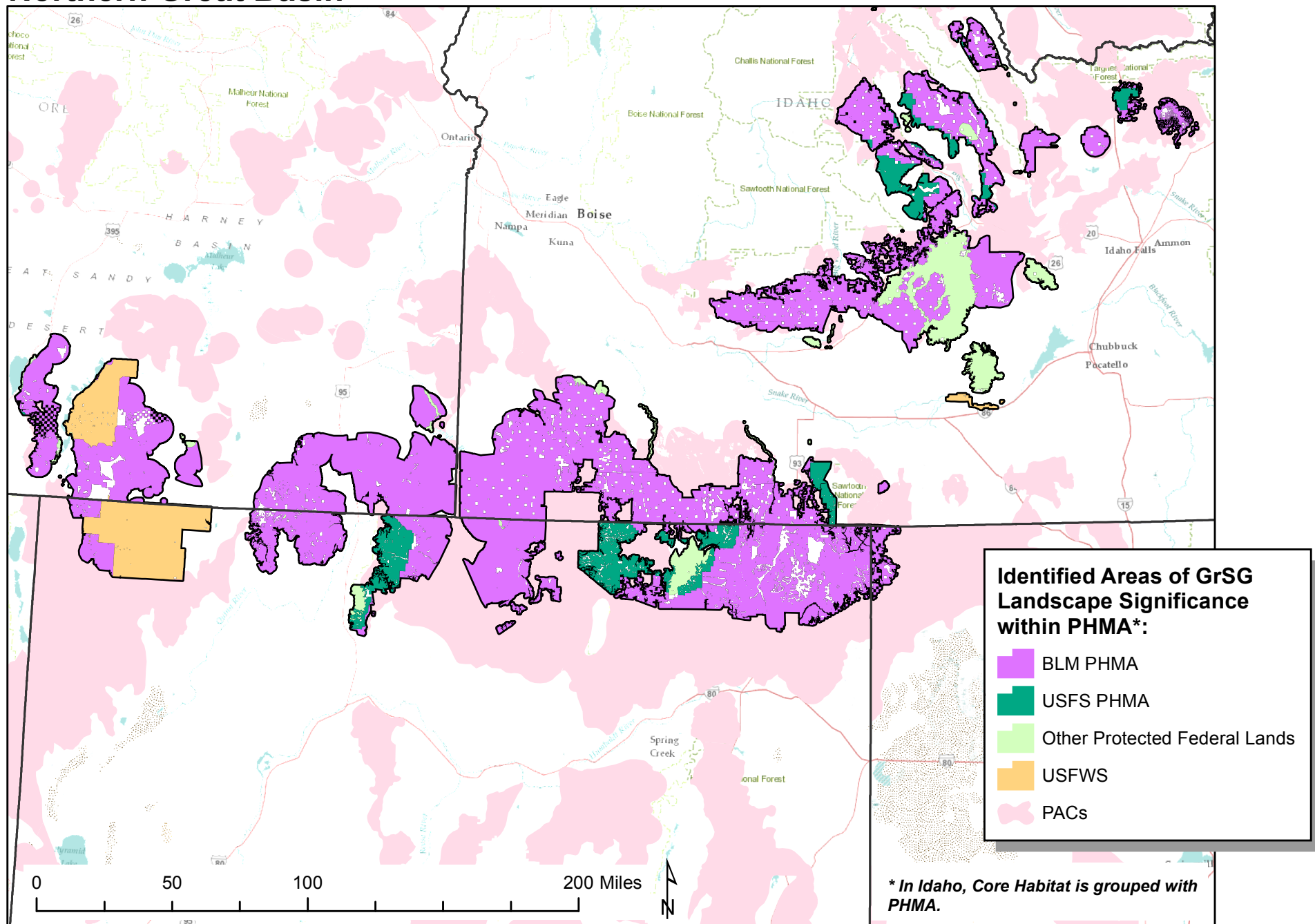
Cheyenne, WY 82009

307-772-2374, ext. 226

got leks?



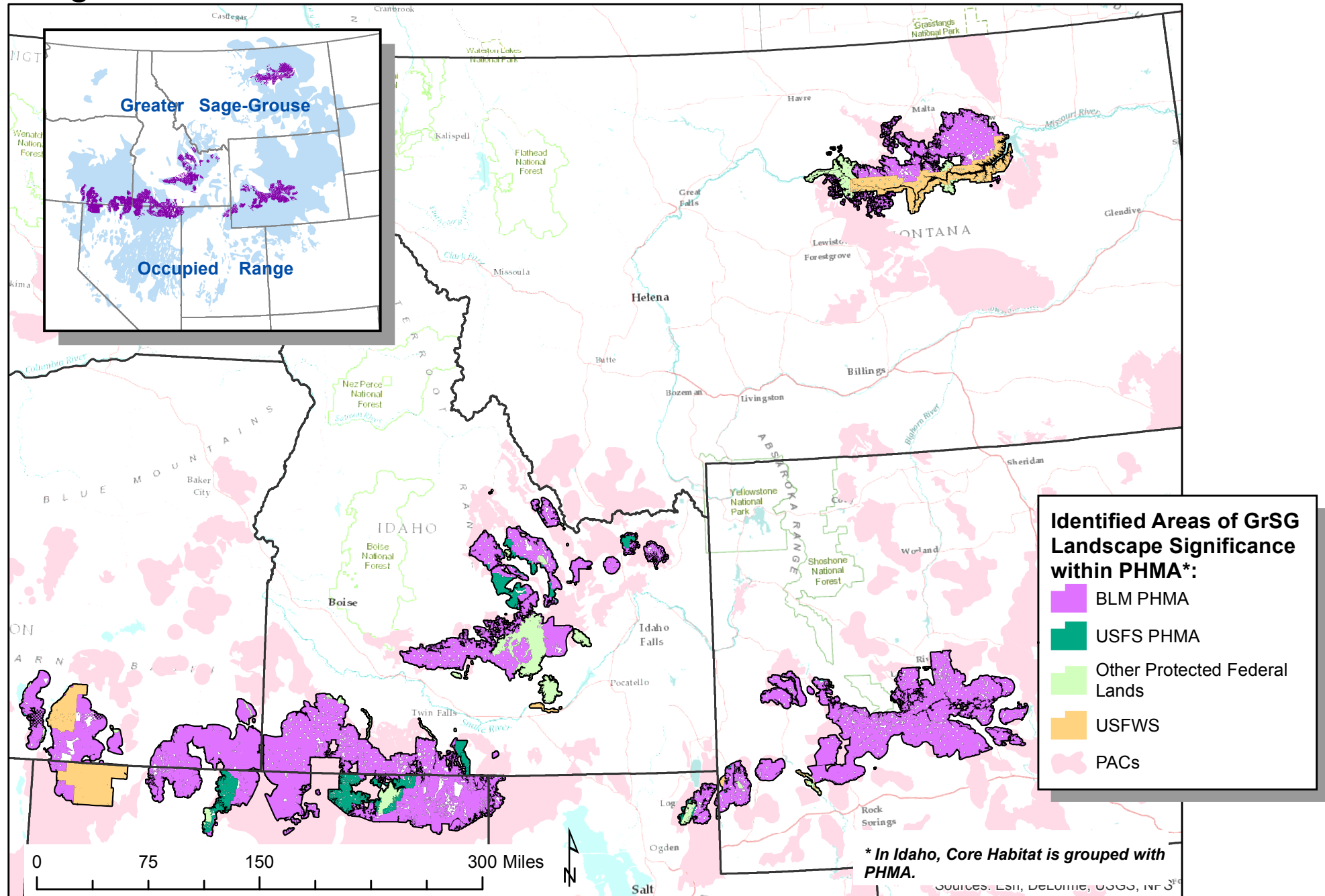
# Identified Areas of GrSG Landscape Significance within BLM/USFS PHMA: Northern Great Basin



Pre-Decisional; For Internal Review Purposes Only. Do Not Distribute.  
PHMA current as of October, 2014.



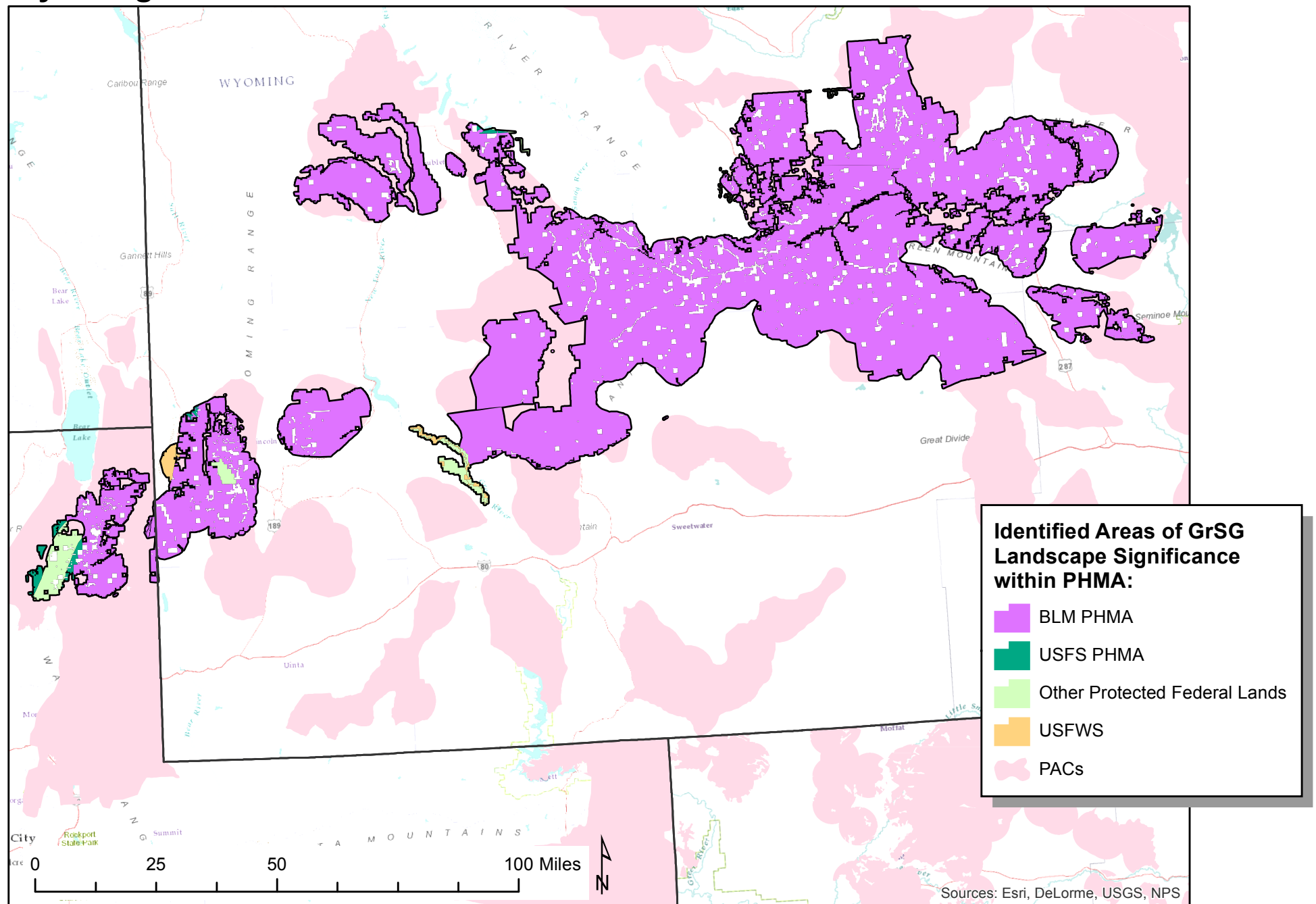
# Identified Areas of GrSG Landscape Significance within BLM/USFS PHMA: Rangewide



Pre-Decisional; For Internal Review Purposes Only. Do Not Distribute.  
PHMA current as of October, 2014.



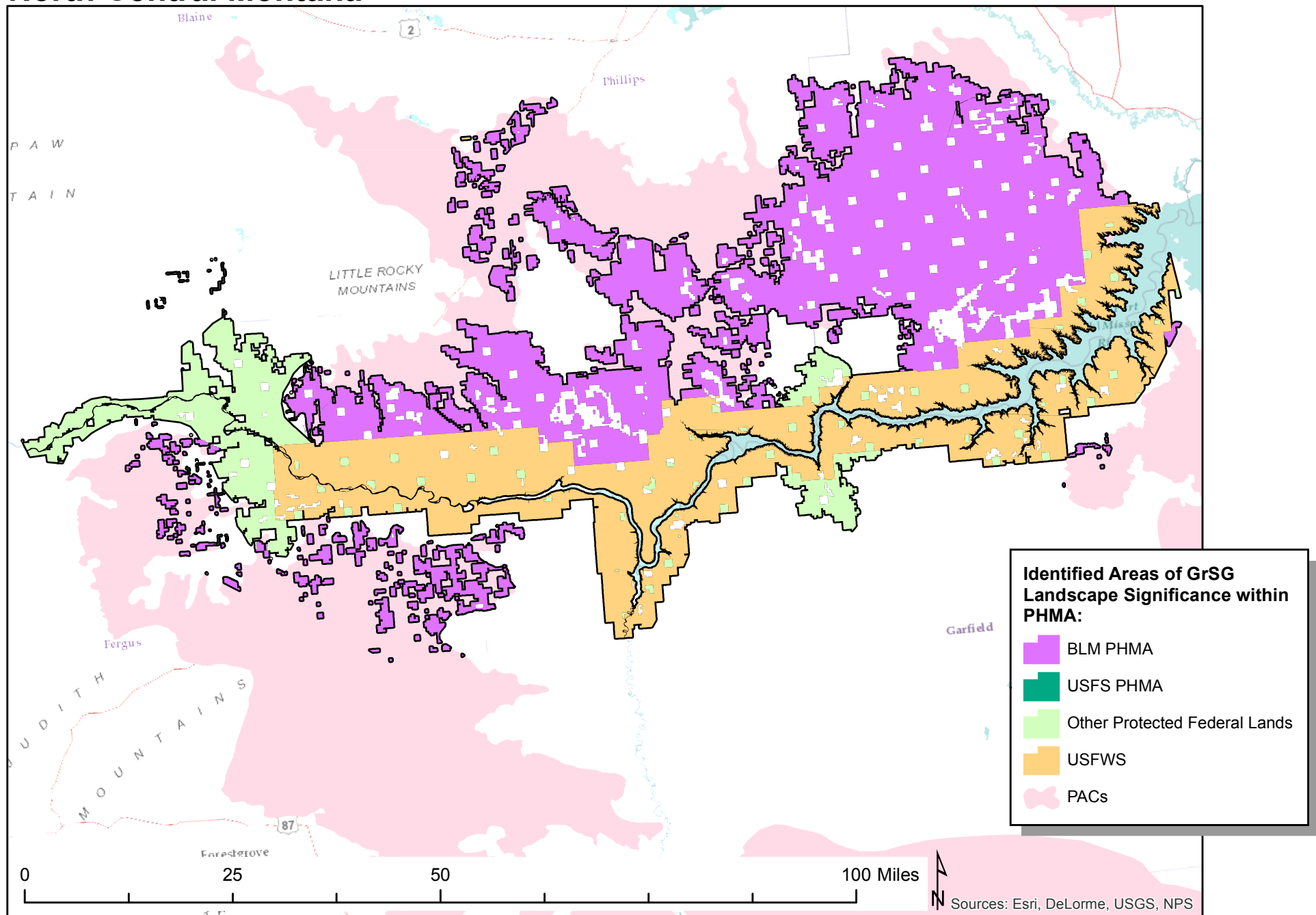
# Identified Areas of GrSG Landscape Significance within BLM/USFS PHMA: Wyoming Basin



*Pre-Decisional; For Internal Review Purposes Only. Do Not Distribute.  
PHMA current as of October, 2014.*



# Identified Areas of GrSG Landscape Significance within BLM/USFS PHMA: North Central Montana



Pre-Decisional; For Internal Review Purposes Only. Do Not Distribute.  
PHMA current as of October, 2014.